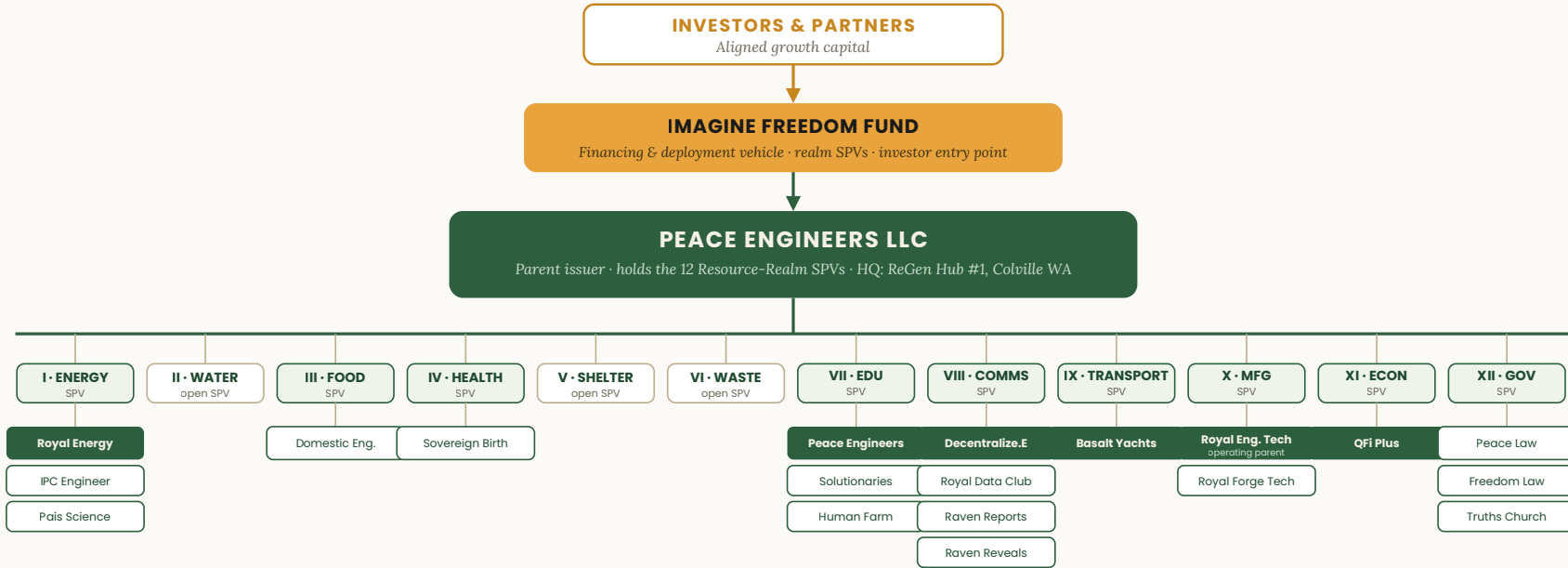
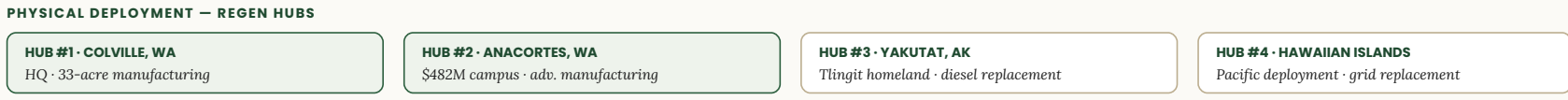


How the System Is Held Together

Peace Engineers LLC, as parent issuer, holds the 12 Resource-Realm SPVs through which the Imagine Freedom Fund deploys capital into the twenty ventures.



CROSS-CUTTING SPINE
 Materials → Energy → Vessels → Campus value chain runs across the Manufacturing, Energy & Transportation SPVs;
 Truths Church, Peace Law & the Peace Covenant supply the cultural + governance coherence binding all realms.



■ Anchor / operating venture □ Supporting venture □ Realm SPV (active) □ Realm SPV (open / roadmap)

Illustrative structure for discussion. Several ventures touch more than one realm and are shown under their primary realm. Realms II (Water), V (Shelter) and VI (Waste) are established as open SPVs on the roadmap. Final legal structure subject to counsel.