



PEACE ENGINEERS

THE PEACE ECOSYSTEM · IMAGINE FREEDOM FUND

Master Business Plan

One regenerative operating system. Twenty ventures. Twelve realms.

A unified plan for the family of ventures engineering peace, health, and abundance across the 12 Resource Realms – financed and deployed through the Imagine Freedom Fund under Peace Engineers LLC.

PREPARED BY

Raven Rolland Gregg, Founder
Peace Engineers LLC
Yakutat Tlingit Tribe
Yakutat, Alaska

ISSUER

Peace Engineers LLC
Parent issuer, the PEACE Ecosystem
939 Clugston Onion Creek Rd
Colville, WA 99114 · ReGen Hub #1

FIRST EDITION · FOR INVESTORS, PARTNERS & ALLIES · MAY 2026

Executive Summary

Scarcity is not a natural condition – it is an engineered systems outcome, the predictable result of centralized, extractive provisioning. The corollary is the founding insight of the PEACE Ecosystem: if scarcity can be engineered, so can abundance, resilience, and sovereignty.

The PEACE Ecosystem is a family of twenty ventures built on that premise, organized around a single framework – the Peace Protocols – which defines how human provisioning can be made local, regenerative, and anti-fragile across twelve interdependent Resource Realms and seven Sovereign Bodies. Where most mission-driven portfolios are a loose collection of projects, this is one operating system: a hard-technology core that generates real revenue and defensible moats, wrapped in the digital, human, governance, and capital layers required to deploy it at scale.

At the center is a regenerative materials-and-energy value chain already being built: basalt rock converted by plasma furnace into advanced composite, powered off-grid by licensed catalyzed-fusion systems, manufactured into vessels and infrastructure, and anchored by a revenue-bearing industrial campus. Around that core sit ventures spanning clean energy, sovereign finance, AI and data, education, media, law, and community – each mapping to a Resource Realm or Sovereign Body, and each a node in the same network.

Deployment is organized geographically into ReGen Hubs – regional centers that manufacture and install core Regenerator systems. Phase 1 establishes Hub #1 in Colville, WA (HQ and manufacturing), Hub #2 on the Anacortes waterfront (advanced manufacturing), and early Pacific deployments in Yakutat, Alaska (Tlingit homeland) and the Hawaiian islands, with a roadmap toward 52+ regional chapters across the Pacific Ring.

Capital is raised and allocated through the Imagine Freedom Fund, with Peace Engineers LLC as parent issuer across dedicated realm SPVs. This plan presents the ecosystem as a whole: the framework, the venture architecture, the value chain, the deployment geography, and the financing structure.

20

VENTURES, ONE SYSTEM

12

RESOURCE REALMS

7,777

PEACE ENGINEERS (GOAL)

52+

REGIONAL CHAPTERS

02 THE THESIS: PEACE AS MEASURABLE INFRASTRUCTURE

Centralized extractive systems concentrate ownership, require perpetual financing, and externalize their environmental costs. They monetize scarcity. Distributed regenerative systems invert this: they localize capability, compound community resilience, and internalize ecological benefit – and, critically, they can be made cheaper at the unit level once the right technology is in place.

The Peace Protocols formalize this into a measurable framework. Peace is defined not as sentiment but as a dynamically stable equilibrium, quantified by two coupled indices:

Peace Efficiency Index $P_e = \sum (R_i / D_i)$

Regenerative output relative to dependency, summed across the 12 Resource Realms.

Community Vitality Index $CVI = (H + Dg + F) / (S + Db + De)$

Human flourishing — health, dignity, freedom — measured against scarcity, debt, and dependency.

In plain terms: as local regenerative provisioning rises and external dependency falls, communities become measurably more peaceful, resilient, and sovereign. Local energy reduces geopolitical fragility; local food reduces supply-chain risk; local water reduces conflict; local manufacturing reduces extraction. Peace becomes a unit-economics story — and a deployable engineering problem.

03 THE ARCHITECTURE: 7 SOVEREIGN BODIES + 12 RESOURCE REALMS

The framework organizes all of human sovereignty into nineteen measurable areas: seven internal Sovereign Bodies (the human dimension) and twelve external Resource Realms (the provisioning dimension). Every venture maps to one or more — which is what makes a portfolio of twenty businesses cohere into a single system rather than a catalog.

SEVEN SOVEREIGN BODIES Spiritual · Mental · Emotional · Physical · Economic · Cultural · Political

I Energy	II Water
III Food	IV Health
V Shelter	VI Waste
VII Education	VIII Communication
IX Transportation	X Manufacturing
XI Economics	XII Governance

Roadmap expands toward 19 total regenerative sectors. Each Resource Realm is issued through a dedicated SPV under Peace Engineers LLC.

04 THE VENTURE PORTFOLIO: FIVE INTEGRATED LAYERS

The twenty ventures resolve into five layers. The hard-tech core creates the value and the moat; the surrounding layers deploy, fund, govern, and humanize it. Read together, they describe one regenerative civilization stack.

LAYER A — MATERIALS, ENERGY & HARD TECH (THE ENGINE)

REALM X — MANUFACTURING & MATERIALS

Royal Engineering Tech royalengineering.tech

The parent operating company. America's first vertically integrated basalt manufacturing and data-infrastructure operation, and the source of the advanced composite the other ventures are built from. Proprietary plasma-furnace technology converts local basalt rock into composite, powered off-grid by the ecosystem's own catalyzed-fusion systems. Royal Energy Club operates as its clean-energy subsidiary.

Plasma-furnace materials · Zero-emission production · 51% Alaska Native-owned · SDB-certified

REALM X — MANUFACTURING & MATERIALS

Royal Forge Tech royalforge.tech

Advanced basalt-fiber forging. The materials forge — basalt-fiber manufacturing through plasma-melting technology, producing structural composite that outperforms fiberglass while being fire-, UV-, and corrosion-resistant, non-toxic to produce, and fully recyclable. Tied to the Global Oceanic Holdings industrial campus (ReGen Hub #2) on the Anacortes waterfront.

Plasma-melt basalt fiber · Recyclable · Anacortes ReGen Hub #2

REALM I — ENERGY

Royal Energy Club royalenergy.club

Clean regenerative energy for all. The energy subsidiary, manufacturing EnergiCell® / Regenerator clean-power systems. Peace Engineers holds a license to manufacture and distribute ENG8's catalyzed-fusion technology — demonstrated live again the weekend of this writing. Targets a generation cost near \$15/MWh against a \$100+/MWh grid average, with a 5–10× output-to-input ratio and zero emissions. Phase 1 hubs: Colville (WA), Yakutat (AK), and the Hawaiian islands.

5–10× output/input · ~\$0.02 target \$/kWh · 54 planned ReGen Hubs · 33-acre Colville hub

Licensed ENG8 catalyzed fusion · EnergiCell® · Diesel & grid replacement · Indigenous & Pacific partnerships

REALM I — ENERGY

IPC Engineer ipc.engineer

Open-source energy education. A 20+ year body of inductive pulse charging (IPC) research, released free and open as 23+ lessons with full build guides, schematics, and measurement protocols. Functions as the ecosystem's open-knowledge and talent-funnel layer — building the engineering community that staffs the rest of the system.

100% free & open source · 23 lessons · Talent & community funnel

REALM IX — TRANSPORTATION

Basalt Yachts basaltyachts.com

Vessels built from basalt. The world's first marine vessels manufactured from basalt-fiber composite — lighter, stronger, and more sustainable than fiberglass — paired with catalyzed fusion-class propulsion for zero-emission range. The flagship demonstration of the materials-and-energy core in a high-value consumer product.

Basalt-composite hulls · Fusion-class propulsion · Flagship product

REALM I — ENERGY / R&D

Pais Science pais.science

Advanced field-effect breakthroughs. The frontier-research arm — documenting Pais-effect technologies and their applications in advanced energy and propulsion. The lab pursues high-energy-density field-effect breakthroughs (room-temperature superconductivity, electromagnetic field generation, and inertial-mass-reduction concepts) pointing toward the next generation of power and propulsion behind the ecosystem's long-range ambitions.

Field-effect physics · Energy & propulsion R&D · Frontier science

LAYER B — DIGITAL, AI & DATA INFRASTRUCTURE

REALM VIII — COMMUNICATION

Decentralize.Earth decentralize.earth

Decentralized systems for a sovereign planet. A white-label AI automation platform and the digital backbone for distributed governance, technology, and infrastructure across the ecosystem. Productizes the ecosystem's automation and coordination capability for outside communities and businesses on a tiered subscription model.

White-label AI automation · Distributed governance · Subscription revenue

REALM VIII — COMMUNICATION

Royal Data Club royaldata.club

Your sovereign AI council. A sovereign data and AI-advisory platform: a personal council of AI advisors for personal and professional life, built so individuals and communities own, analyze, and leverage their own data rather than surrendering it to centralized platforms.

Personal AI advisory council · Data sovereignty · Member onboarding

LAYER C — CAPITAL, FINANCE & ECONOMICS

REALM XI — ECONOMICS

Imagine Freedom Fund imaginefreedom.fund

The financing & deployment vehicle. The capital layer of the ecosystem — a fund empowering communities through financial sovereignty and grassroots freedom projects, and the structure through which investment flows into the realm SPVs under Peace Engineers LLC. The primary investor-facing entry point to the entire system.

Parent issuer: Peace Engineers LLC · Realm SPVs · Investor entry point

REALM XI — ECONOMICS

QFi Plus / QFI OmniFi qfiplus.com

Financial command center — now live. The OmniFi™ financial and business command center — "freedom as a service" — explicitly designed by Peace Engineers, led by CEO & Chairman Johnny Boles. As of the weekend of this writing it is live in execution: QFI OTC (institutional-grade digital-asset execution) is operational; QFi Plus Private Reserve (insurance, retirement, legacy) is live across 40+ countries; QFI Tokenization Solutions for real-world assets is live; QFI Advanced Intel peptides is live; the QFI Store is live; and the OMNIX AI guidance layer is live across all divisions. Multi-currency mobile banking (QFS Global Plus) spans 100+ countries, with major new divisions and integrations slated for June.

7 divisions · OTC + banking 100+ countries · Private Reserve 40+ countries · OMNIX AI live

OTC · multi-currency banking · tokenization · insurance/legacy · energy-as-a-service · OMNIX AI

LAYER D — HUMAN, COMMUNITY & SOVEREIGNTY

Peace Engineers peaceengineers.org COORDINATION

The global corps deploying regenerative systems across the 12 Realms — organized into 52+ regional chapters, each a ReGen Hub, with a goal of 7,777 trained Peace Engineers and a three-tier path (Cadet → Steward → Architect).

Peace Engineer (personal platform) BODY — MENTAL

Personal platform and portfolio documenting one Peace Engineer's journey building sovereign infrastructure — the individual face of the movement.

Solutionaries Club solutionaries.club BODY — MENTAL

The human-coordination and talent-aggregation layer: a community of solution-oriented builders collaborating across disciplines on the ecosystem's hardest problems.

Human Farm (platform) BODY — POLITICAL

An educational platform exposing systems of dependency and control, mapping pathways to sovereignty across the 7 Bodies and 12 Realms — the on-ramp that frames the whole worldview.

Sovereign Birth Club (platform) REALM IV — HEALTH

Knowledge and resources for autonomous, holistic birthing and parental sovereignty — health-realm sovereignty from the very start of life.

Domestic Engineering Club (platform) REALM III — FOOD

Practical skills for self-sufficient living — homesteading, food production, and resilient household systems — the household-scale complement to industrial deployment.

LAYER E — GOVERNANCE, LAW, MEDIA & SPIRIT

Peace Law peace.law REALM XII — GOVERNANCE

Legal frameworks for peaceful conflict resolution, common-law principles, and rights preservation; home of the Peace Covenant that gates access to the Peace Engineers communities.

Freedom Law (platform) REALM XII — GOVERNANCE

Legal education and resources for preserving individual freedoms, constitutional rights, and natural-law principles — the rights-defense complement to Peace Law.

Raven Reports (platform) REALM VIII — COMMUNICATION

Independent journalism and investigative reporting on energy, sovereignty, and truth — the ecosystem's editorial voice.

Raven Reveals (platform) REALM VIII — COMMUNICATION

Investigative platform exposing corruption and illuminating paths to transparency and accountability — the long-form complement to Raven Reports.

Truths Church (platform) BODY — SPIRITUAL

Spiritual foundation exploring universal truths and the intersection of faith and sovereign living — the coherence layer underpinning the movement's culture.

05 THE VALUE CHAIN: HOW THE PIECES REINFORCE

The strategic power of the ecosystem is that its hard-tech ventures form one closed loop, and the soft ventures feed it talent, demand, capital, and legitimacy. The materials-and-energy spine runs:

Basalt rock → **plasma foundry** (Royal Forge / Royal Engineering Tech) →
composite + EnergiCell® fusion power (Royal Energy) → **vessels & infrastructure**
(Basalt Yachts) → **revenue-bearing campus** (Global Oceanic / ReGen Hub #2)

The energy systems first power every ReGen Hub off-grid; market delivery follows once internal demand is met — de-risking the energy product by proving it on the company's own load before it is ever sold. Around this spine, IPC Engineer and Solutionaries Club supply trained engineers; Decentralize.Earth and Royal Data Club supply coordination and data tooling; QFi Plus and the Imagine Freedom Fund supply capital and settlement; Peace Law and the Peace Covenant supply governance and membership; and Raven Reports, Human Farm, and Truths Church supply the narrative and cultural coherence that drives adoption.

Each venture can stand alone, but each is worth more inside the system – because the realms reinforce one another. That compounding is the investment thesis.

06 DEPLOYMENT: THE REGEN HUB NETWORK

Deployment is geographic and phased. Each ReGen Hub is a regional center that manufactures and installs core Regenerator systems and seeds a local Peace Engineers chapter. Phase 1 is anchored by standing relationships – "a geography of trust":

ReGen Hub #1 COLVILLE, WA – HQ & MANUFACTURING

The founding origin and headquarters. A 33-acre site for EnergiCell® production and basalt-composite manufacturing, returned to as the corps' home base at scale.

ReGen Hub #2 ANACORTES, WA – ADVANCED MANUFACTURING

The Global Oceanic Holdings waterfront campus: a \$482M, 41-acre development with a 750-slip marina, 132-room membership hotel, and 80,000 sq ft advanced-composites factory – consolidating basalt, vessel, and fusion-power manufacturing.

Hub #3 YAKUTAT, AK – TLINGIT HOMELAND

First catalyzed-fusion diesel-replacement deployment – replacing \$0.53+/kWh diesel with a target near \$0.02/kWh clean energy, in partnership with the Tlingit community.

Hub #4 HAWAIIAN ISLANDS – PACIFIC DEPLOYMENT

The third Pacific node, where standing relationships open the door to replacing \$0.32+/kWh island grid power – the highest-cost incumbent in the U.S. and the deployment where our economics are most obvious.

Flagship 6-unit Regenerator systems cited at Yakutat, Colville, Vancouver, and Mexico City. Roadmap: 52+ regional chapters across the Pacific Ring, expanding to the Andes, Amazon, Africa, and Asia.

07 BUSINESS MODEL & CAPITAL STRUCTURE

The ecosystem blends durable hard-asset revenue with scalable digital and membership income, so mission-driven and open-source ventures are underwritten by commercial ones:

- **Hard-asset & manufacturing revenue** – basalt composite, Regenerator energy systems, vessels, and the Anacortes campus (marina, hotel, factory). The capital-intensive, defensible core.
- **Energy sales** – clean power at a target near \$0.02/kWh against \$0.32–\$0.53/kWh incumbents, sold first internally, then to communities, utilities, and government.
- **Recurring digital & data** – Decentralize.Earth subscriptions, Royal Data Club memberships, and QFi Plus financial-service fees across banking, OTC, and reserve products.
- **Education, membership & community** – courses, chapter memberships, the Peace Covenant network, and consultation revenue.
- **Government & set-aside contracting** – Royal Engineering Tech's 51% Alaska Native ownership and SDB certification open federal sole-source and set-aside lanes.

Capital is raised through the Imagine Freedom Fund, with Peace Engineers LLC as parent issuer across dedicated realm SPVs — letting investors back the whole system or specific realms while the parent retains the integrated value chain. A qualified opportunity-zone strategy underpins the property acquisitions.

08 THE OPPORTUNITY & THE ASK

The PEACE Ecosystem is not a single product seeking a market; it is an integrated regenerative economy with a hard-technology engine, a deployment corps, sovereign and indigenous partnerships, and a financing structure already in place. The remaining requirement is aligned growth capital and aligned partners to accelerate Phase 1 and scale the ReGen Hub network.

THE INVITATION

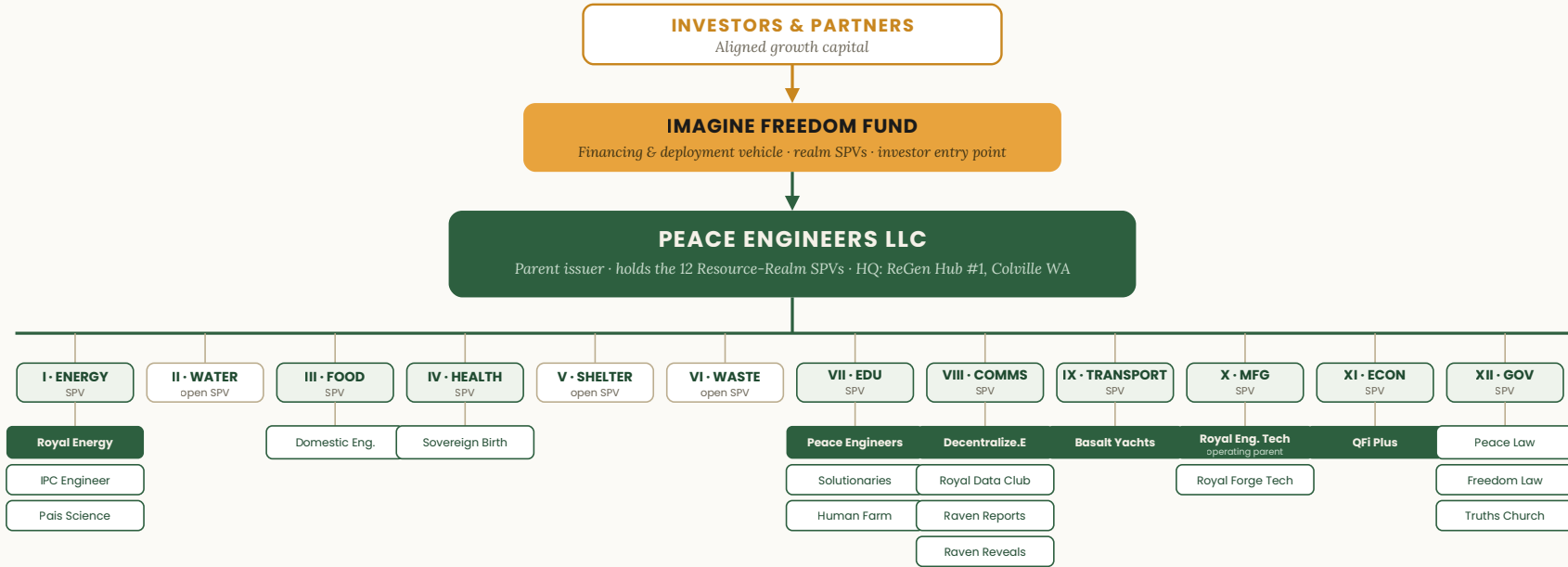
- ◆ A working session to walk the hard-tech core — materials and energy first, then the surrounding layers.
- ◆ A structured data room: the Imagine Freedom Fund, Peace Engineers LLC, and the realm SPVs.
- ◆ Site visits to ReGen Hub #1 (Colville) and ReGen Hub #2 (Anacortes) to see the deployment nodes firsthand.

Scarcity is engineered. So is abundance. The PEACE Ecosystem is the architecture for building it — one regenerative operating system, deployed realm by realm, hub by hub.

A public overview of the Peace Engineers ecosystem for investors, partners, advisors, and allies. It describes ventures at varying stages of development; figures, technology performance claims, trademarks, licenses, and jurisdictional coverage are as represented by the respective ventures and warrant independent verification by any investor. This is not an offer to sell securities.

How the System Is Held Together

Peace Engineers LLC, as parent issuer, holds the 12 Resource-Realm SPVs through which the Imagine Freedom Fund deploys capital into the twenty ventures.



CROSS-CUTTING SPINE
 Materials → Energy → Vessels → Campus value chain runs across the Manufacturing, Energy & Transportation SPVs;
 Truths Church, Peace Law & the Peace Covenant supply the cultural + governance coherence binding all realms.



■ Anchor / operating venture □ Supporting venture □ Realm SPV (active) □ Realm SPV (open / roadmap)

Illustrative structure for discussion. Several ventures touch more than one realm and are shown under their primary realm. Realms II (Water), V (Shelter) and VI (Waste) are established as open SPVs on the roadmap. Final legal structure subject to counsel.